



adam's mark
the hotel of st. louis



The Official Hotel to host the

Sunday Serenades & Musical Mondays Musicians



Fourth and Chestnut • 314-241-7400 • 800-444-ADAM
www.adamsmark.com

Other Adam's Mark Locations:

Buffalo-Niagara, NY • Dallas, TX • Denver, CO • Indianapolis, IN

The Compton Heights Concert Band

Edward Dolbashian, Music Director/Conductor
Harry F. Swanger, President/Executive Director

Presents

Sunday Serenades

&

Musical Mondays

#4

July 23/24, 2006



Photo by Mary Butkus

Sunday Serenades

Sundays - July 2, 9, 16, 23, 30; August 6, 13, 2006
Francis Park, Eichelberger & Donovan, 7:30 PM

Musical Mondays

Mondays - July 3, 10, 17, 24, 31; August 7, 14, 2006
Tower Grove Park, Grand & Magnolia, 7:30 PM

The Compton Heights Concert Band

- 1976 Band Formed in living room in Compton Heights neighborhood
- 1977 First Concert in Tower Grove Park
- 1979 First Holiday Pops Concert
- 1980 *TuneFul Tuesdays* now *Musical Mondays* summer concert series in Tower Grove Park
- 1983 VP Fair-audience of 1 million, band bus ends in river!
- 1984 Band charity bingo begins
- 1986 *Sunday Serenades* concert series in Francis Park begins
- 1988 Band hosts Association of Concert Bands Convention
- 1989 First Tour to St. Joseph and Omaha
- 1992 First indoor series - Band on Grand and First Missouri Arts Council tour - Hermann, MO
- 1998 First Powell Symphony Hall Concert
- * 1998 First "Hugh Smith Opera Tour" (Paris)
- 2000 "Sunrise Serenades" TV Show Aired for 18 months on Saturdays, KMOV, Channel 4, CBS
- * 2004 Band celebrates 25th Anniversary of summer concert series!
- * 2006 Band Celebrates 30th Anniversary!

The driving force behind the Compton Heights Concert Band is a preservationist philosophy determined to promote the **American Concert Band**, the unique American art form created by **Patrick Gilmore** in the 1860's and perfected by **John Philip Sousa** at the turn of the last century, and to play the fine concert band literature of yesteryear. As with jazz, another unique American art form, concert bands and concert band literature are undergoing a resurgence in America. Sousa's concerts were dubbed "**the world's greatest pops concerts**". In this tradition, a Compton Heights Concert Band concert features programming appealing to all ages and musical tastes; "something for everyone".

From its modest beginning in the Compton Heights neighborhood livingroom of band organizer, President and Executive Director, **Harry F. Swanger**, in 1976, the Band quickly became a metropolitan St. Louis area tradition, attracting over 50,000 listeners annually to its famed summer series, ***Sunday Serenades*** in Francis Park and the tandem series ***Musical Mondays*** in Tower Grove Park. **This year marks the 9th Annual highly successful Compton Heights Band Holiday Pops at Powell Hall. Matinee and evening performances include headliners such as Peter Nero, piano; Doc Severinsen, trumpet; and the perennial summer and Powell Hall crowd favorite, Hugh Smith, tenor.** Other featured artists include: Arturo Sandoval, jazz/classical trumpet wizard; Sigrun Hjalmtysdottir, "Diddú", Soprano, David Morris, International Whistling Champion, Buckwheat Zydeko, Sukay, "Music of the Andes"; Alex Klein, Oboe; James Christensen, Walt Disney World; BNFL Brass Band; Butch Wax & The Hollywoods with Billy Peek; the late Johnnie Johnson; Jerry Robinson & Sax-O-Peel, The Lennon Brothers; the late William Warfield, Baritone; Debbye Turner, marimba; Ricardo Morales, Metropolitan Opera principal clarinet; the late Myron Floren, accordion; Keith Brion, Sousa portrayer; The Legend Singers; Robert Ellison, baritone; and Beverly Stewart-Anderson, soprano.

Edward Dolbashian, Music Director & Conductor, is the orchestra and opera conductor at the University of Missouri, Columbia, the Clayton Symphony, and the Alton Symphony Orchestra. He was appointed conductor of the Compton Heights Concert Band in September, 1998. He is a professional oboist and an English Horn player, originally from New York. **Lucy Schroeder**, announcer, is the wife of band vice-president and tubist **Jon Schroeder**, an original member of the Compton Heights Band!

In addition to weekly Band rehearsals, members devote thousands of volunteer hours at bingo at Bandwagon Hall, 6245 Lemay Ferry Road on Friday and Saturday nights throughout the year. The Band is also financially supported by the **Adam's Mark Hotel, Catherine Manley Gaylord Foundation, Clifford Willard Gaylord Foundation, Foot and Ankle Associates, Missouri Arts Council, Regional Arts Commission, Southwest Bank, St. Louis Parks & Recreation Department, and Bandwagon Members.** To make a tax deductible donation, send to: Compton Heights Band, **3120 Lafayette Ave**, St. Louis, MO 63104. (314) 776-2227 and (314) 772-9797 fax. Email: chband@stlouis.missouri.org www.chband.org

Sigrun Hjalmtysdottir, "Diddú", Soprano



Sigrun Hjalmtysdottir (Diddú) was born in Reykjavik, Iceland. In 1972 she was chosen to take the part of Miss Guomunsen in the television adaptation of Brekkukotsannall by the Nobel Prize winning author Halldor Laxness. She began drama studies in 1974, and has acted on stage, on television and in films, including *Karlarorinn Hekla*, directed by Guony Halldorsdottir, and *Biodagar*, directed by Friorik Por Frioriksson.

During the years 1975-78 she worked with the group Spilverk þjóðanna, and her many recordings include ballads, light songs and opera.

Sigrun studied at the Guildhall School of Music and Drama in London from 1979 to 1984, graduating with the AGSM diploma, and completed postgraduate studies there in 1985. In 1987-88 she took private lessons in Italy, and since then she has concentrated on the operatic repertoire.

Her operatic debut was with the Icelandic Opera in the role of Olympia in Offenbach's *Tales of Hoffmann* at the National Theatre. Other roles she has sung include Susanna in the *Marriage of Figaro*, the soprano part in Orff's *Carmina Burana*, *Papagena* and the *Queen of the Night* in the *Magic Flute*, Lucia in *Lucia di Lammermoor*, Violetta in *La Traviata* and Adina in *L'elisir d'amore* (all with the Iceland Opera), and Gilda in *Rigoletto* with the Gothenburg Opera.

She has also sung with the Iceland Symphony Orchestra opposite tenor Jose Carreras, and appeared with orchestras and on the recital platform in the Nordic countries, the Baltic States, Britain, Italy, United States, Japan and elsewhere. In March, 2005, she sang with Plácido Domingo and the Iceland Symphony and has been engaged in performances in Paris and Strassbourg.

Sigrun Hjalmtysdottir has received many awards for her singing, including the *Principals Prize* at the Guildhall School of Music and Drama (1985); the *Internazionale Concorso Biennale F. Mecenate* in Italy (1988); the Knight's Cross of the Icelandic Order of the Falcon (1995); and was made a Grand Mistress of the Finnish Order of the Lion in 1997.

In 2006, Diddú appeared on A Prairie Home Companion with Garrison Keillor. Broadcast from the Icelandic National Theatre with special guests, Diddú and John C. Reilly; the show aired on Public Radio (KWMU 90.7) in St. Louis on May 20, 2006. She was the only female singer in the show and was included in the script of *Guy Noir*.

Two years ago, she appeared with the Compton Heights Concert Band in the authentic "Sousa" concert. Last year, she paired with Hugh Smith during *Sunday Serenades & Musical Mondays*. It was magnificent! We are again thrilled to present this world class soprano as soloist with the Band!

Hugh Smith, Tenor

Hugh Smith made his professional debut in *Madama Butterfly* at the Teatro San Carlo, Naples, and has since appeared in leading tenor roles throughout the world including at Opera de Paris, l'Opera National de Paris, Berlin Deutsche Oper, Concertgebouw, Hamburgische Staatsoper, Lithuanian Opera, Netherlands Opera, New National Theatre, Tokyo, Opera North, Opera de Puerto Rico, and the Edinburgh Festival.

In the United States, he appeared at the Lyric Opera of Chicago, Metropolitan Opera in the Parks, Richard Tucker Gala, Baltimore Opera, Cincinnati Opera, Dayton Opera, Houston Grand Opera, Michigan Opera Theatre, Opera Company of Philadelphia, Opera Pacific, San Diego Opera, San Francisco Opera, Spoleto Festival, Toledo Opera, and at the Kennedy Center Awards in honor of Luciano Pavarotti.

In 2004, Hugh performed *Messa Da Requiem* by Giuseppe Verdi at the Deutsche Oper Berlin. He also appeared as Gustaf III., König von Schweden in *Un Ballo in Maschera* by Giuseppe Verdi at the Deutsche Oper Berlin. He soloed in Mahler's Symphony No. 8 "Symphony of a Thousand" at the Alfredo Kraus Auditorium, Las Palmas de Gran Canaria. He returned to the Canary Islands for Dvorák's *Stabat Mater* with the Orquesta Filarmónica de G. Canaria. Last summer, Hugh debuted at the National New Theater, Tokyo, Japan, as Don José in *Carmen*. In the Fall, he appeared twice at the Concertgebouw, under Maestro Edo de Waart to rave reviews. And, he toured with Opera North in their production of *Manon Lescaut*. A group of 17 people from St. Louis traveled to England to see Hugh in *Manon Lescaut*! The group tours are organized by Band President & Executive Director Harry Swanger, and his wife, Kitty. December 2004, Hugh appeared with famed trumpeter, Doc Severinsen in Pops at Powell with the Compton Heights Concert Band.

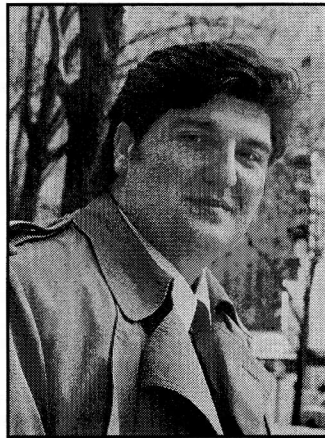
January 2005, Hugh sang Mahler's Symphony No. 8 with the Rotterdam Philharmonisch Orkest under Maestro Valery Gergiev. In March, he was at the Netherlands Opera in *Norma*. In April, he performed a recital at Bowling Green State University and sang with the Madison Symphony in Mahler's Symphony No. 8. In the summer, Hugh appeared in *Madame Butterfly* at Tokyo's New National Theatre as well as coming to Saint Louis for the Compton Heights Band's dual concert series, *Sunday Serenades & Musical Mondays*. In September he performed in Norway. And, in December he was in St. Louis, again for the Band's annual Holiday Pops concerts at Powell Hall!

January 2006 took him to Tel-Aviv to for *Don Carlos*. Most recently, he has been in Wales for three months for weekly performances of *Mazeppa*. He will appear twice this summer with the Compton Heights Band and will return for the December Holiday Pops concerts at Powell Symphony Hall on December 12, 2006! In the meantime, he will perform his Wagner's *Lohengrin* in Lyon, France, October 2006!

Smith holds a Masters in Music from Bowling Green State University, Ohio and continued his studies at the Academy of Vocal Arts, Philadelphia.

Opera Performances:

Alfredo, La Traviata (Lyric Opera of Chicago, Opera de Puerto Rico, and Theatre Sao Carlos in Lisbon)
Cavaradossi, Tosca (Netherlands Opera)
Des Grieux, Manon Lescaut (Opera Pacific, Opera North, and Bayerische Staatsoper)
Don Carlo, Don Carlo (Opera National de Paris and Lithuanian Opera)
Don Jose, Carmen (National New Theater, Tokyo; Opera Company of Philadelphia, Michigan Opera Theatre, and Toledo Opera)
Enee, Les Troyens (Chatelet Theatre Musical De Paris)
Faust, Faust (Dayton)
Forresto, Attila (Lyric Opera of Chicago and Bologna)
Gustaf III., König von Schweden in Un Ballo in Maschera (Berlin Deutsche Oper)
Laca, Jenufa (Lyric Opera of Chicago, Charleston and Spoleto USA)



Lenski, Eugene Onegin (Opera Pacific and Academy of Vocal Arts)
Manrico, Il Trovatore (Opera Pacific and Academy of Vocal Arts)
Matteo, Arabella (Chatelet Theatre de Musicale de Paris)
Mazeppa (Welsh National Opera)
Pollione, Norma (Opera Geneva, Berlin Staatsoper, San Diego Opera, Netherlands Opera)
Pinkerton, Madama Butterfly (Tokyo; Houston; San Francisco; and Napoli - Teatro San Carlo)
Riccardo, Un Ballo in Maschera (Academy of Vocal Arts)
Rodolfo, La Boheme (Cincinnati, Toledo, Dayton, Hamburgische Staatsoper and Baltimore Opera)

World Premier:

An American Requiem by Richard Danielpour, November 14/15, 2001.

In-Concert:

Beethoven's Ninth (Puerto Rico Symphony)
Die Liebe der Danae (Avery Fisher Hall, NY)
Giovanna d'Arco (Carnegie Hall)
Le roi Arthur (King Arthur) (Avery Fisher Hall)
Lello ou Le Retour a la vie (Orchestre Revolutionnaire et Romantique)
Les Troyens (Edinburgh Festival)
Manon Lescaut (Concertgebouw-Radio Filharmonisch Orkest Holland)
Nabucco (Carnegie Hall)
Te Deum op. 22 by Berlioz (Concertgebouw-Radio Filharmonisch Orkest Holland)
Tosca (Met in the Parks, NY)
Messa Da Requiem by Giuseppe Verdi (Deutsche Oper Berlin, BBC Philharmonic; Bologna, teatro comunale)
Symphony No. 8 by Mahler (Rotterdam Philharmonisch Orkest, Orquesta Sinfonica de Galicia, Orquesta Sinfonica de Tenerife, Madison Symphony)

Soloist:

American Symphony Orchestra & Concert Chorale of New York
BBC Philharmonic
Bochum Philharmonic
Bowling Green University Orchestra
Collegiate Chorale at Carnegie Hall
Compton Heights Concert Band of St. Louis
Dayton Philharmonic
Fort Wayne Philharmonic
Kennedy Center Awards in honor of Luciano Pavarotti
Madison Symphony
Orquesta Sinfonica de Galicia, Orquesta Sinfonica de Tenerife
Pacific Symphony
Philadelphia Orchestra
Puerto Rico Symphony
Radio Filharmonisch Orkest Holland
Rotterdam Philharmonisch Orkest
St. Louis Symphony Orchestra
Teatro Comunale di Bologna
Toledo Symphony
Tucker Gala, NY

Recordings: *An American Requiem* by Richard Danielpour.

King Midas in Die Liebe der Danae by R. Strauss (Avery Fisher Hall, NY).

Compton Heights Concert Band Holiday Pops Concerts, 1998-2003, Powell Symphony Hall. Seven releases are available at the Band's promotional table tonight! Pick up the NEW 2-Disc DVD in **Surround Sound** from the 2003 Powell Hall concert! It includes the International Whistling Champion, David Morris, as well as Hugh Smith! Sacred and Secular discs for year-round listening!

Available at the Promo Table Tonight!
**Surround-Sound 2-Disc DVD of The 2003 Powell Hall
Holiday Spectacular Concert!**
Featuring Hugh Smith, Tenor & David Morris, Whistler. Secular & Sacred Music!
Year Round Listening!

The Compton Heights Concert Band

Edward Dolbashian, Music Director & Conductor
 Harry F. Swanger, President & Executive Director
 Lucy Schroeder, Announcer

Flute
 Kathy Brophy
 Trina Dickmann
 Holly Feldman
 Chuck Green
 Carol Marsh
 Marie Myers
 Lisa Tipton
 Jenny Wachter
 Elizabeth Watt
 Amy Wolff

E♭ Clarinet
 Vicky ER Schorr

Bass Clarinet
 Erin Jackson
 Laura Timm

Alto Saxophone
 Nancee Glaser
 Doug Hanson
 Agnis Retenais

Tenor Saxophone
 Chris Bellavia

Baritone Saxophone
 Eric Tobin

Trumpet
 Lisa Blackmore
 Mark Blackmore
 Jacqueline Redmond
 Atena Kasprzak
 Meagan Klein
 Leo Makarewicz
 Steve Robinson
 Robert Souza
 Lea Troeh
 Mary Weber

Electric Keyboard
 Carol Marsh

French Horn
 Bryan Dillon
 Cheryl Hoard
 Jim Olfky
 Paul Thomas

Trombone
 Gary Lipsutz
 Dan Redmond
 Ed Redmond
 Ryan Repking

Bass Trombone
 Lindsay Barth

Euphonium
 Paul Price

Tuba
 Jeff Hoard
 Jon Schroeder

Percussion
 Renato Durante
 Mark Fox
 Adam Kopff
 Kevin Luker
 Wm.Shane Williams

Electric Bass
 Paul Thomas

Piccolo
 Lisa Tipton

Bassoon
 Harry Swanger

Oboe
 Diane Lieser

Clarinet
 Steve Abraham
 Ruth Bailey
 Erika Eggers
 John Kennedy
 Bryan Kirchoff
 Catherine Reitz
 Vicky ER Schorr
 Becky Soeder
 Bob Shiflet
 Allison Webb

The Compton Heights Concert Band
 Is Supported by the Following Sponsors:

Adam's Mark Hotel
 Catherine Manley Gaylord Foundation
 Clifford Willard Gaylord Foundation
 Foot & Ankle Associates
 Missouri Arts Council
 Regional Arts Commission
 Southwest Bank
 St. Louis Parks & Recreation Department
 Tower Grove Park
 and Bandwagon Members.

MAC



Mark Your Calendars Now!
 Tuesday, December 12, 2006

The Compton Heights Concert Band
 Presents

9th Annual!

Holiday Concert at Powell Hall

2 Performances!

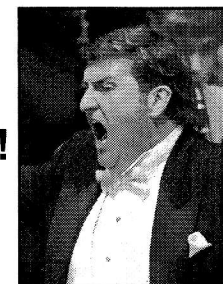
Matinee 2:00 PM

Evening 8:00 PM

Tickets
 on Sale
 Soon!

Featuring:

Hugh Smith, Tenor!
 And More!



Hugh will be here after performing Wagner's "Lohengrin" in
 Lyon, France

Tickets on Sale Soon!

Powell Symphony Hall Box Office
(314) 534-1700

Group Tickets Available! 20 or More \$20 Each!
 Group Sales - Call Group Ticket Sales Office
(314) 286-4460

Program Notes

By Ronald Swanger

La Boheme Scene:

What could be more romantic than a man and a woman, perfect strangers, meeting in Paris and falling totally in love? That's just what happens in the Parisian garret visualized by composer Giacomo Puccini as the setting for Act I of *La Boheme*.

Rodolpho, a penniless poet meets Mimi, a seamstress, who knocks at his door looking for a light for her candle which has gone out. Then, love and infatuation at first sight takes over!!

Rodolpho sings of Mimi's tiny cold hand "*Che Gelida Manina*" in the December freeze, and then asks the lovely seamstress her name. She responds with "*Si, my chiamo Mimi*" (although she doesn't know why she is called that, since her real name is Lucia).

Fate has brought this duo together on a cold December evening and they join in a lovely duet, "*O Soave Fanciulla*", totally entranced, as they leave the garret to join their friends at the Cafe Momus.

"*O Mio Babbino Caro*" from Gianni Schicchi

As early as *La Boheme*, Puccini had shown a gift for robust comedy, with which he never failed to leave even his most serious operatic works. His opera Gianni Schicchi allows him to be his comic best with rare moments of pause. *O Mio Babbino Caro* represents one of those delicate moments--when Schicchi's daughter, Lauretta, plaintively asks her dear father for help in her quest of marriage to her beloved Rinuccio, despite the complicated family problems. Needless to say, her father has a devious and comic plan to resolve the family's difficult situation.

"*Queen of the Night*"

In Mozart's *The Magic Flute*, the mysterious Queen of the Night, a fearful adversary for her enemies is in no mood to put up with opposition to her wishes for her daughter and for her vengeance against those she perceives as her enemies.

To show her power, she sings a blazing coloratura aria, among the most brilliant of Mozart's creations.

"*Sempre Libera*" & "*Libiamo, libiamo!*"

Verdi's *La Traviata* is filled with gorgeous melodies which supply the music for the doomed relationship of the courtesan Violetta and her new lover, Alfredo. Alfredo toasts her beauty and allure with a drinking song, "*Libiamo, libiamo!*" Later, when thinking of her attraction for Alfredo, Violetta fantasizes at first that their love may be more than a transient fascination, but quickly regains her carefree attitude, by declaring that she will always be free ("*Sempre Libera*").

The Compton Heights Concert Band

Edward Dolbashian, Music Director & Conductor
Harry F. Swanger, President & Executive Director
Lucy Schroeder, Announcer

July 23, 2006 - Francis Park
July 24, 2006 - Tower Grove Park

Sigrun Hjalmtysdottir, "Diddú", Soprano Hugh Smith, Tenor

Program

From Maine to Oregon March	John Philip Sousa
Barber of Seville Overture	Gioacchino Rossini
O Mio Babbino Caro from Gianni Schicchi Sigrun Hjalmtysdottir, Soprano	Giacomo Puccini / Tohru Takahashi
Come Back to Sorrento Hugh Smith, Tenor	E. DeCurtis / Paul Van Loan
Queen of the Night from the Magic Flute Sigrun Hjalmtysdottir, Soprano	W.A. Mozart
First Suite in Eb - 1st Movement	G. Holst
Core 'ngrato Hugh Smith, Tenor	S. Cardillo / Leonard B. Smith
Sempre libera from La Traviata Sigrun Hjalmtysdottir, Soprano	Giuseppe Verdi / Donald W. Stauffer
The Klaxon March	Henry Fillmore

Intermission

The Footlifter March	Henry Fillmore
Che Gelida Manina from La Boheme Si, mi chiamano Mimi from La Boheme O Soave Fanciulla from La Boheme Hugh Smith, Tenor; Sigrun Hjalmtysdottir, Soprano	Giacomo Puccini / Leonard B. Smith Giacomo Puccini / E. L. Barrow Giacomo Puccini / Donald W. Stauffer
Suite From "Carmen" - Chorus and March	Bizet / Bellis
Madama Butterfly - Finale - Act I - Love Duet Hugh Smith, Tenor; Sigrun Hjalmtysdottir, Soprano	Puccini / Odom
Tannhauser March	R. Wagner / M.C. Meyrelles
The Prayer Amigos Para Siempre (Friends for Life) Libiamo, libiamo from La Traviata Hugh Smith, Tenor; Sigrun Hjalmtysdottir, Soprano	Foster/Sager/Trans. Jerry Robinson Andrew Lloyd Webber/D.Black/Tr. Robinson Giuseppe Verdi / Donald W. Stauffer

The Bandwagon

Notables Club

Hugh & Ann Bergman
Bob Blankmann
Carol Joy Brooks Memorial
Tony Grasso
*Significant Monetary Support

Alderwoman Donna M.C. Baringer
Representative Russ Carnahan
Senator Patrick Dougherty
Robert Nicolay
Alderman Lewis Reed
Aldermanic Pres, Jim Shrewsbury
*Significant Civic Support

Sousafanatic \$1,000

Lindsay Barth
Mrs. C.O. Hanes
Sharon & Joe Intagliata, Unico, Inc.
Nancy & Ken Kranzberg
June & Fred Kummer
John Howard Merle, ChFC, CLU,
REBC, MBA, LUTCF
Scarab Printing Arts

Bandmaster \$500

Catherine Manley Gaylord Fnd.
Commerce Bank
Bette & Andrew Constantin
Lynn & Stephen Muench

A. Bandmaster \$250

Jean & Mickey Alessi
Thomas & Carolyn Gilmore
Bob & Jeanne Haddenhorst
Loni & Steve Martin
Norman & Shirley Williams

Band Director \$150

Anne & Dick Bischoff
Kenneth & Donna Bodart
Hallye & Merle Bone
Christina Carr
Don & Tina Cavalli
Peggy & Bob Drummond
Judy & Bob Hrasky
Ken & Jeanne Kirchoff
Chris Miranti
Joseph M. Mount & Mary G. Mount
Mr. & Mrs. Donald Paul
St. Louis Hills Neighborhood Assn.
Robert & Ruth Ann Shiflet

Band Member \$100

Ed & Charlotte Abraham
Ruth & Rich Bailey
Fred & Kitty Baumgarth
Flora Bild

Ann Boggiano
Rick & Sue Constance
Mr. & Mrs. Charles J. Cook
Jim and Ginger Crooks
Steve Crouch & Richard Price
Alex & Gloria Deeken (Flag Man)
Jon & Barbara Dressel
Mr. & Mrs. Jordaen H. Eggers
Chris & Betty Eichenlaub
Bob & Rainey Fahey
Nancy Anne Fellingner
Alyce Ficken
Evelyn Finnie
Martha Hartman
Ruth Ann Henry
Stan Kann
Anita Lieser
Betty S. Larson
Patricia Mazanec
Margaret DelMonaco
Patrick & Vicky O'Neill
Mary Ellen Pearson
Esther M. Phillips
Mr. & Mrs. Peter C. Sharamitaro, Jr.
Anita Siegmund
Killian Smith, Architect
Regina Smith
Betty & Dan Staufenbiel
Nancy R. Suellflow
Ron & Dianne Winney
Law Office of Wolfgram
& Associates, P.C.
Richard & Marjorie Wnuk

Band Aide \$55

David & Elizabeth Anderson
Betty-Jane M. Barsachs
Tom & Kathy Bellavia
Fran & Marie Bergmann
Robert L. Blanke Jr.
Frank & ShirleyAnn "Sas" Boro
Dr. Richard A. & Mrs. Anice M.L. Etz
Nancy Anne Fellingner
Debbie Fellenz
Harlie Frankel
Dr. Raymond Frederick
Frank & Doris Hartmann
Jackie & Roger Heitland
Lil Loehr
Jeanette Mahacek
Ray Marklin
Marcella Milcic
Bill & Rose Mueller
Mike & Peggy Pollihan
Marian T. Reitz
William H. Reitz
Earl & Arleen Roettger
Albert E. Schaefer
Michael Schroepfel
David J. Steger
Grace M. Stover
Mark & Nancy Svendsen
Laura Thomas

Mike, Elyse, Stephanie,
& Sam Tillman

Jack Uxa
Pat & Bob Wortmann
Jerry & Karen Wright
George F. Zeiss / Barbara M. Zeiss
Bryan Walker

Senior Band Aide \$50

W. Richard & Virginia Bartz
Helen L. Bauer
Rich & Rose Behnen
Bud & Charlotte Bornholdt
Mr. & Mrs. Robert H. Branom
Frances R. Breckner
Hartley and Joyce Carlson
Bob & Sylvia Clobes
James P. Cummings
Medford & Shirley Darnell
Margaret Del Monaco
Mary Ann Dill
Mr. & Mrs. Miriam & Gene Dryden
Mac & Marita Dryden
Jane E. Eck
Marie Eckert
Hal & Audrey Eynon
Dolores Fellenz
Joanne & Bill Fogarty
Erline & Jack Frese
Mr. & Mrs. James Gaebler
Richard A. Grady Family
Gloria Grifero
Gloria Guetzke
Allen & Betty Haenni
Estelle & Fred Handler
Lee & Pat Hanley
Kuni Harmon
Marguerite E. Heider
Mr. Carl Henke
Bob & June Henke
Glenn Hensley
Bill & Beth Hentchel
Shirley Hergenroeder
Adelma Hoerber
Nellie Hohnsen
William & Dorothy Hungate
Denny & Lynn Isenberg
Midge & Norm Karl
Nancy King
Rosemarie Kirchhoefer
Andy & Ruth Kocot
Arnold & Janet Kreitman
Mr. & Mrs. Robert P. Laclede
Dave & Judy Lane
Bernice Langing
Barbara Lindecke
Vernon & Versa Lindemann
Billie Linder
Bill & Elenor Luebbers
Patricia Lynch
Lou & Nola Macchi
Anna Marie Mackey
Dan & Margaret McGrath

The Bandwagon

Senior Band Aide \$50

Barry & Judy McLaughlin
Mary Merrick
Bill & Joan Miller
Tom & Joanne Mudd
George & Evelyn Murphy
Melvin Nierdieck
Joe & Sharon Orf
Don & Joyce Patt
Florence Phillips
Bill & Mary Pitcher
Lucile Quernheim
Patricia Roerig
Bob & Betty Rybacki
Vi Saffo
Wayne Sachtleben
Ruth Schemkes
Larry & Marcella Schultz
Sisters of the Most Precious Blood
Bruce E. Smith
Ralph Soebbing
Betty Stevenson
Robert J. Stock
Shirley Stoecker
Marilyn Stuesse

Betty & Bill Taylor
Harold & Kermine Thies
M/M W. Webster/L.Bochantin
Jim & Shirley Weir
Mimi Jeske & Tom Wilhite
Ann & Joe Wilson
Chris & Pat Winkelmann
Florentine Wozniak
Dotty Young

Memorials

Philip Alderman
In Memory of Edwin Bender
Betty Blankmann
Carol Joy Brooks
Mildred Dennis
Fred Kaucher, Jr.
Harrison Don King
Thanks to: Sandi Hagler, Jean
Bender, Ann Reichenbacher, Lorene
Ferrario, Vi Petrowski, Anne Serkin,
Jana & Thomas Embry, Robert &
Linda Eves, Kevin & Christine
Schwab, Marianna Steffens, Al &
Marilyn Horst, Mr. & Mrs. Robert

Morton, David & Laura Suedkamp &
Family, Joseph & Carole Witzig, T.J.
Mullin, Michael & Hildegard McEntee,
Michael & Sandra Hagler, Dan &
Patricia Heuermann, Jim & Jane
Orling, James & Carole Droste, David
& Pat Munz, Earl / Anne Nelson,
Aaron and Linda Baese, Stephen
and Peggy England

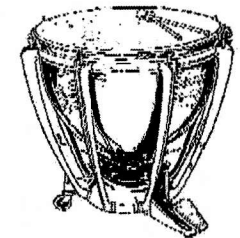
Verna E. Schroeder
Dorothy Schumann
Harold A. Spellmeyer
Kenneth S. Tiefenbrunn

Matching Gifts

AXA Foundation
Boeing
Compaq
Hewlett-Packard
IBM
Lucent Technologies
Norfolk Southern Foundation
Pfizer Foundation
SBC Foundation
Sigma-Aldrich

Please Support The Compton Heights Band!

We need your help. Sponsors provide a portion of our concert support. Band members help us substantially through volunteering at our charity bingos. We need all of you to pitch in to keep the Sousa tradition alive! Here's how you can help:

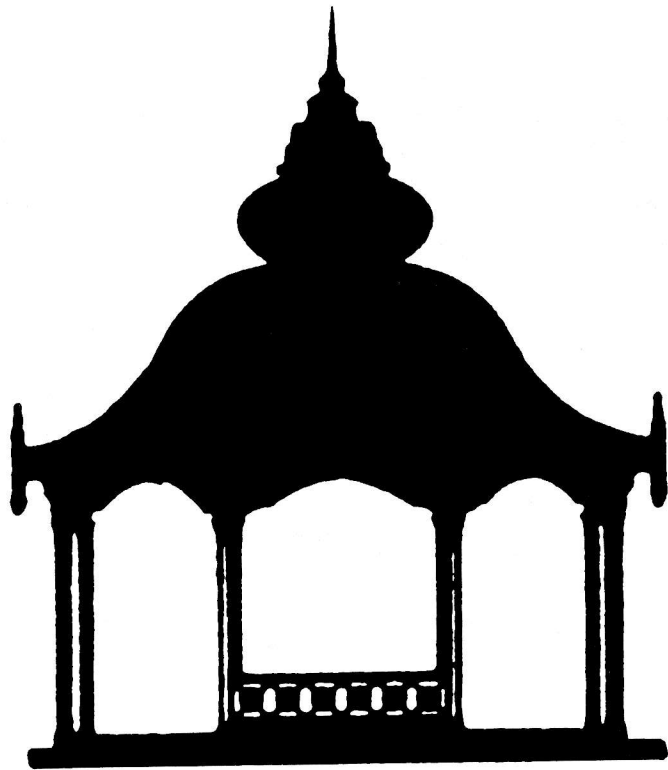


* Become A Bandwagon Member!

* Buy a soda, bratwurst, and ice cream at our Band Benefit Concession Stand.

* Purchase CDs, DVDs, T-Shirts, and Books at our Promotional Table.

Thank you!



**In harmony
with our community
since 1920.**



SOUTHWEST BANK

A St. Louis Name To Count On Since 1920

Kingshighway at Southwest **776-5200**
Kingshighway at Chippewa **776-5200**

Clayton—Brentwood Blvd. **727-7070**
1/2 mile north of the Galleria

Now in Crestwood, too.

9206 Watson Road across from Crestwood Plaza Dillard's

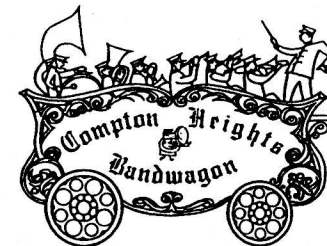
842-5455

Member, FDIC

Strike Up The Band!

Join the Bandwagon! America's Band! America's Music!

The Compton Heights Band needs your help to keep the Sousa tradition of patriotic American music alive and well in St. Louis! Our Bandwagon donor support group is the way to do it. Your donation will be put to good use. We were recently named a "cultural overachiever", StL.Post-Dispatch. So take a moment to become a BANDWAGON supporter of the Compton Heights Concert Band. **"You have a musical jewel! Take good care of it!"** says James Christensen, former Disney Music Director.



Sincerely, Harry Swanger, President/Executive Director

Send to: Compton Heights Band, Inc., 3120 Lafayette Ave St. Louis, MO 63104
Please allow a few weeks before your name is printed.

www.chband.org (314) 776-2227, FAX (314) 772-9797

I would like to help the Compton Heights Band of St. Louis and be a Bandwagon member!

Please accept my tax deductible contribution.

- | | |
|--|---|
| <input type="checkbox"/> \$5,000+ Notables Club | <input type="checkbox"/> \$ 150 Band Director |
| <input type="checkbox"/> \$2,500 President's Circle | <input type="checkbox"/> \$ 100 Band Member |
| <input type="checkbox"/> \$1,000 Sousafanatic | <input type="checkbox"/> \$ 55 Band Aide |
| <input type="checkbox"/> \$ 500 Bandmaster | <input type="checkbox"/> \$ 50 Senior Band Aide |
| <input type="checkbox"/> \$ 250 Assistant Bandmaster | |

Name: _____

Please print your name as you would like it listed in the program.

Address: _____

City _____ State _____ Zip _____

Phone: _____

Email: _____

- Check enclosed payable to Compton Heights Band
 Please contact me about planned giving. (Charitable Remainder Trust, Real Estate, Stock)
 Please charge my Visa Mastercard AE DS

Expiration Date: _____

Card Number: _____

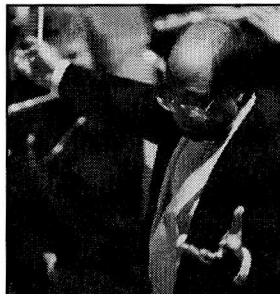
Mail to: Compton Heights Band of St. Louis, 3120 Lafayette Ave, Saint Louis, MO 63104

The Compton Heights Band is a 501 (c) (3) tax exempt organization.

Edward Dolbashian, Music Director/Conductor

Edward Dolbashian has been Music Director of the Missouri University Philharmonic in Columbia, Missouri, since 1984; Music Director of the Alton Symphony Orchestra, in Alton, Illinois, since 1993; and the Compton Heights Concert Band since September 1998. He is also the conductor of the Clayton Symphony.

Mr. Dolbashian began his musical training as a student at New York's famed High School of the Performing Arts. He earned his degrees in oboe performance at the Hartt College of Music, Hartford, CT.



His conducting career began as director of the Holyoke Symphony Orchestra in Holyoke, MA. He studied conducting at the prestigious Pierre Monteaux School of Orchestra Conducting in Maine, under Charles Bruck; and at Yale University as student conducting assistant to Otto Werner-Mueller leading to a Master of Musical Arts degree in Orchestral Conducting. Further studies took place at the Tanglewood Institute, with Leonard Bernstein, Seiji Ozawa, Andre Previn, and Gustav Meier, and the Boris Goldovsky Opera Conducting Seminar.

Mr. Dolbashian was a member of the Hartford Symphony for 11 years and was principal oboe of the Hartford Chamber Orchestra, the Goldovsky Opera Company, and the Hudson Valley Philharmonic. He debuted as oboe soloist in Town Hall, NY, NY, 1969.

NEXT WEEK!

Sunday/Monday
July 30/31, 2006
Dr. Robert Froehner
Theremin & Saw



In 2 Weeks!

Sunday/Monday
August 6/7, 2006
Nicole Cabell, BBC 2005
Cardiff Singer of the World!



Remaining *Sunday Serenades & Musical Mondays* Concerts

Sundays in Francis Park 7:30 PM

Mondays in Tower Grove Park 7:30 PM

Sunday/Monday August 6/7, 2006 - **Nicole Cabell, Soprano**
Sunday/Monday August 13/14, 2006 - **Hugh Smith, Tenor**

FOOT AND ANKLE ASSOCIATES

PODIATRIC PHYSICIANS & SURGEONS

Dr. Lindsay D. Barth, FACFAS

Board Certified, American Board of Podiatric Surgery

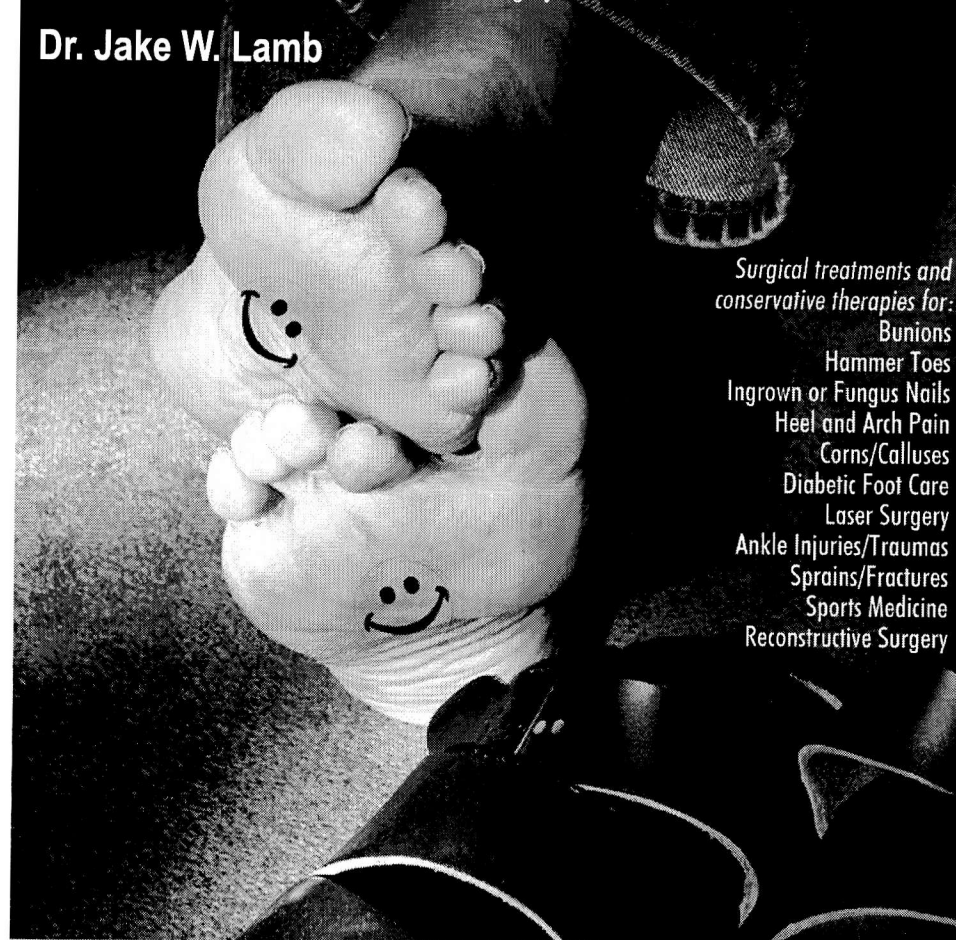
Dr. Sam T. Wood, FACFAS

Board Certified, American Board of Podiatric Surgery

Dr. Christopher T. Sloan, FACFAS

Board Certified, American Board of Podiatric Surgery

Dr. Jake W. Lamb



Surgical treatments and conservative therapies for:

- Bunions
- Hammer Toes
- Ingrown or Fungus Nails
- Heel and Arch Pain
- Corns/Calluses
- Diabetic Foot Care
- Laser Surgery
- Ankle Injuries/Traumas
- Sprains/Fractures
- Sports Medicine
- Reconstructive Surgery

SOUTH COUNTY · NORTH COUNTY · DESLOGE · ST. PETERS · ALTON, IL

MEDICARE PROVIDERS AND MOST INSURANCES ACCEPTED

CALL TOLL FREE

1-866-811-3100

WWW.PODIATRICASSOCIATES.COM